



INSTALLATION INSTRUCTIONS

Unitronic Charge Pipe Kit for MK8 GTI®

UH027-ICA

Unitronic recommends that you read through the entire installation instructions prior to beginning the installation to familiarize yourself with the included components, tools required, and procedures involved with the installation.

DISCLAIMER: Unitronic recommends that a Unitronic Authorized Dealer or other qualified and trained professional should perform the installation of this product.

Unitronic Installation Instructions are also available in digital format, if you prefer. Please visit the corresponding product page for a link to download the digital Installation Instructions.
www.getunitronic.com

It is recommended to confirm all parts are present prior to beginning the installation.

PACKING LIST:

Part Number	Description	Quantity
UH015-IC2	MK8/8Y IC Inlet Charge Pipe	1
UH017-IC2	MK8 GTI IC Outlet Charge Pipe	1
UH047-IC1	Intercooler Inlet Silicone Hose for 2.0TSI MK8/8Y	1
UH048-IC1	Intercooler Outlet Silicone Hose for 2.0TSI MK8/8Y	1
UH049-IC1	Throttle Body Silicone Hose for 2.0TSI MK8/8Y	1
UH050-IC1	Turbo Outlet Elbow Silicone Coupler for 2.0TSI MK8 GTI/8Y A3	1

RECOMMENDED TOOL NEEDED:

- Flat head screwdriver
- 7mm socket



GETUNITRONIC.COM

1

QUESTIONS OR CONCERNS? CALL US TOLL-FREE AT 1.866.341.2447 OR EMAIL US AT INFO@GETUNITRONIC.COM

- Ratchet
- 3mm Allen key (for Unitronic air duct)
- 4mm Allen key
- 5mm Allen key
- T25 Torx
- T30 Torx
- Hose clamp pliers
- Trim removal tool (optional)

(Recommended tools)



1. Open the Engine Compartment first, and then using your Vehicle Hoist or Floor Jack, raise the vehicle and secure it in place.
2. Using your flat head screwdriver or 7mm socket and ratchet, loosen the clamps on either side of the silicone turbo inlet elbow (if using a Unitronic Carbon Fiber Intake System) or using your hose clamp pliers, remove the plastic hose from the airbox to the turbo inlet elbow.



Fig.2

3. Remove the airbox from the vehicle by carefully lifting it upward until it detaches from the three bottom grommets.
4. Using your 3mm Allen key, remove the two screws on either side of the Unitronic Carbon Fiber Air Duct to remove it from the vehicle. If using the stock air duct, use your T25 Torx to remove the two screws holding the air duct to the radiator support.



Fig.4

5. Remove the intake elbow by unscrewing the T30 bolt that secures it to the turbo and rotating clockwise.

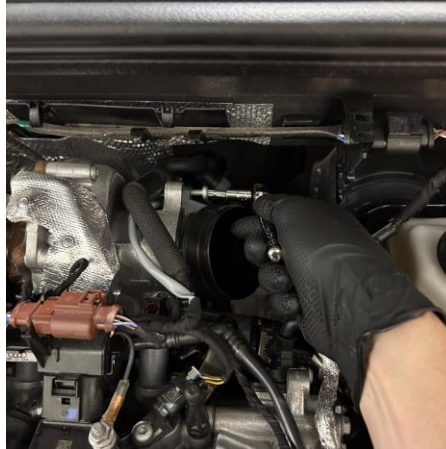


Fig.5

6. With your trim removal tool or flat head screwdriver, unclip the harnesses from the OEM intercooler inlet charge pipe.

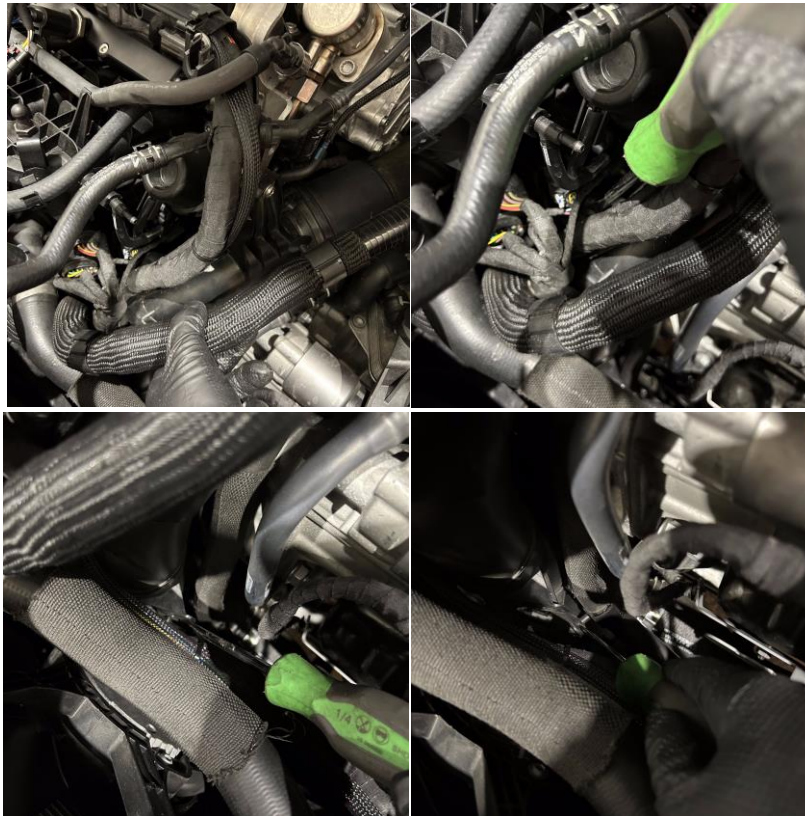


Fig. 6.1 - 6.2 - 6.3 - 6.4

7. Remove the cable guide located at the front left-hand side of the vehicle by lifting up the middle clip and sliding it towards the engine.



Fig.7

8. Using your T30 Torx, loosen the top fastener from the OEM intercooler inlet charge pipe.



Fig.8

9. Loosen both the clamps on the turbo muffler hose using your 7mm socket or flat head screwdriver. (See Fig.9.1 – 9.2)



Fig.9.1 – 9.2

10. Loosen the upper clamp on the throttle body using your 7mm socket or flat head screwdriver.



Fig.10

11. Move to the underside of the vehicle, and remove the belly pan by loosening the eight (8) fasteners with your T25 Torx. (See Fig.11)



Fig.11

12. With your trim removal tool or flat head screwdriver, unclip the harness and coolant line from the OEM intercooler outlet charge pipe.

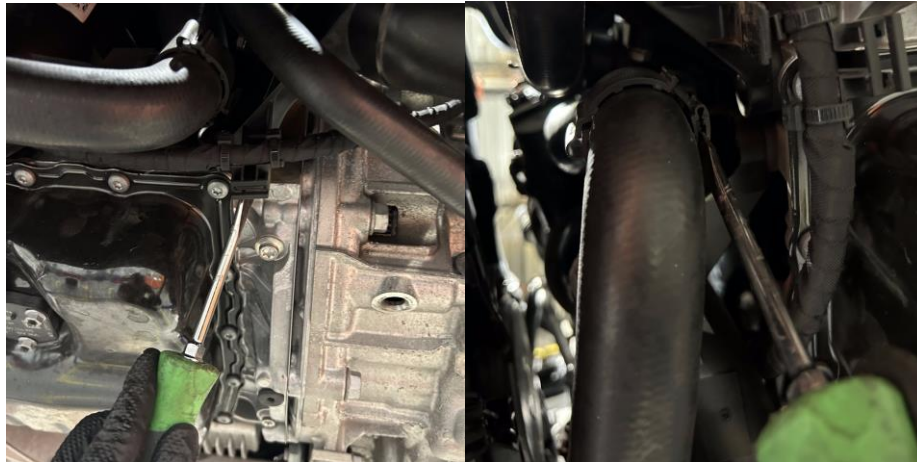


Fig.12.1 – 12.2

13. Unplug the MAP, AC compressor and alternator sensors by pulling and pressing their release pins while pulling outwards gently to avoid breaking the connectors.

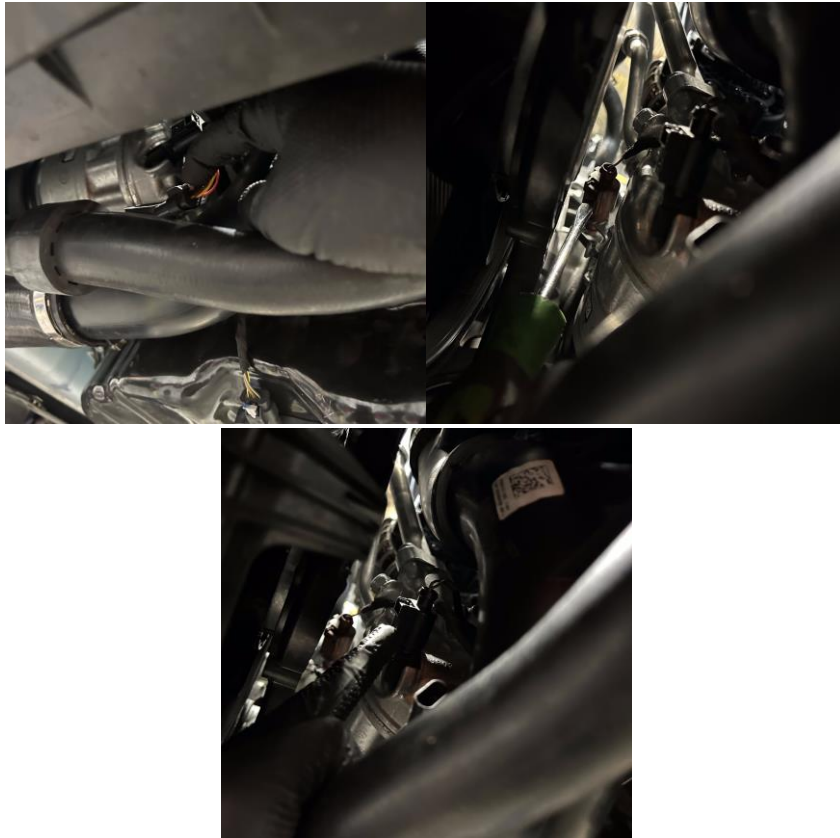


Fig.13.1 - 13.2 – 13.3

14. Using your 7mm socket or flat head screwdriver, loosen the hose clamps holding the intercooler inlet and outlet hoses and remove the hoses from the vehicle.

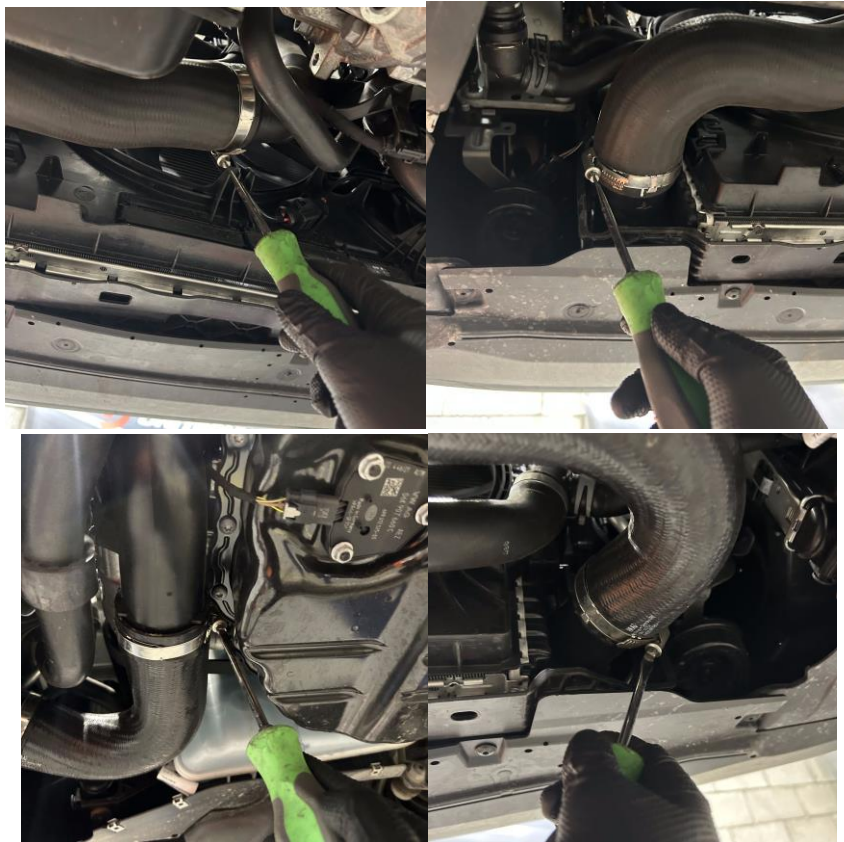


Fig.14.1 - 14.2 - 14.3 - 14.4

15. Loosen the two (2) T30 Torx fasteners from the OEM intercooler outlet charge pipe located behind the MAP sensor and on the right-hand side of the charge pipe.



Fig.15.1 – 15.2

16. Allocate space by moving as many components, wiring looms, etc. out of the way to clear space to remove the factory piping from the vehicle, without getting the piping or wiring caught.



Fig.16

17. Remove the OEM intercooler outlet charge pipe along with the top throttle body hose by pulling them through the underside of the vehicle.



Fig.17

18. Loosen the one (1) T30 Torx fastener from the OEM intercooler inlet charge pipe located on the left-hand side of the bottom of the charge pipe. (See Fig.18)

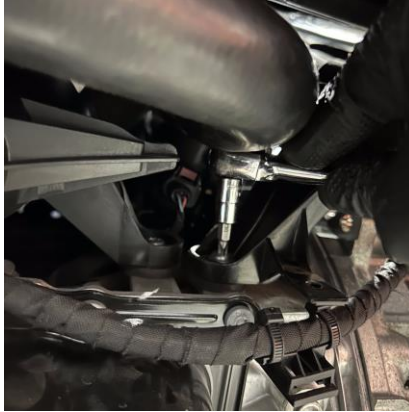


Fig.18

19. Moving back to the engine bay, remove the silicone hose from the turbo muffler by pulling it outward.

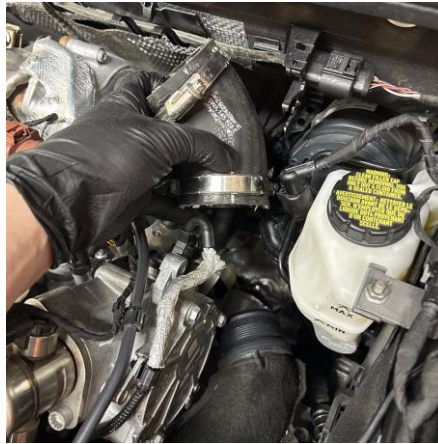


Fig.19

20. Remove the OEM intercooler inlet charge pipe from the engine bay by lifting it upwards, while tilting it towards the rear of the vehicle for ease of removal, making sure there is no piping or wiring caught.

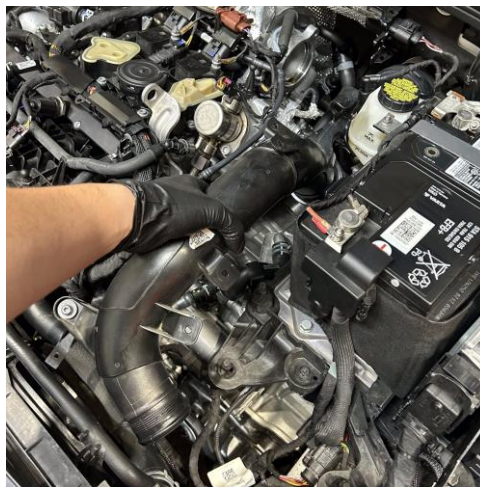


Fig.20

21. Using your T25 Torx, unbolt the MAP sensor from the factory throttle body pipe. Locate your MK8 R & 8Y S3 IC Outlet Charge Pipe (UH017-IC2) and affix the MAP sensor to the proper location using your 4mm allen key.



Fig.21.1 – 21.2

22. For leak prevention, apply teflon tape to the meth port plug and tighten it back into position using your 5mm allen key. (Recommended)



Fig.22

23. Remove all grommets and fasteners from the OEM charge pipes and transfer this hardware onto your Unitronic IC Inlet and Outlet Charge Pipes.



Fig. 23.1 – 23.2 – 23.3 – 23.4

24. Keeping the Unitronic logo facing forwards, install the Unitronic Throttle Body Silicone Hose (UH049-IC1) on top of the IC Outlet Charge Pipe (UH017-IC2). Tighten the lower clamp of the silicone hose using your flat head screwdriver or 7mm socket and ratchet. Do not forget to leave the loosened upper clamp onto the hose in order to tighten the assembly to the throttle body in later steps.



Fig.24

25. From the bottom of the vehicle, install the charge pipe and silicone assembly made in step 27 by pushing it into place onto the throttle body. Use your T30 Torx to tighten the two fasteners from the Unitronic IC Outlet Charge Pipe (UH017-IC2).

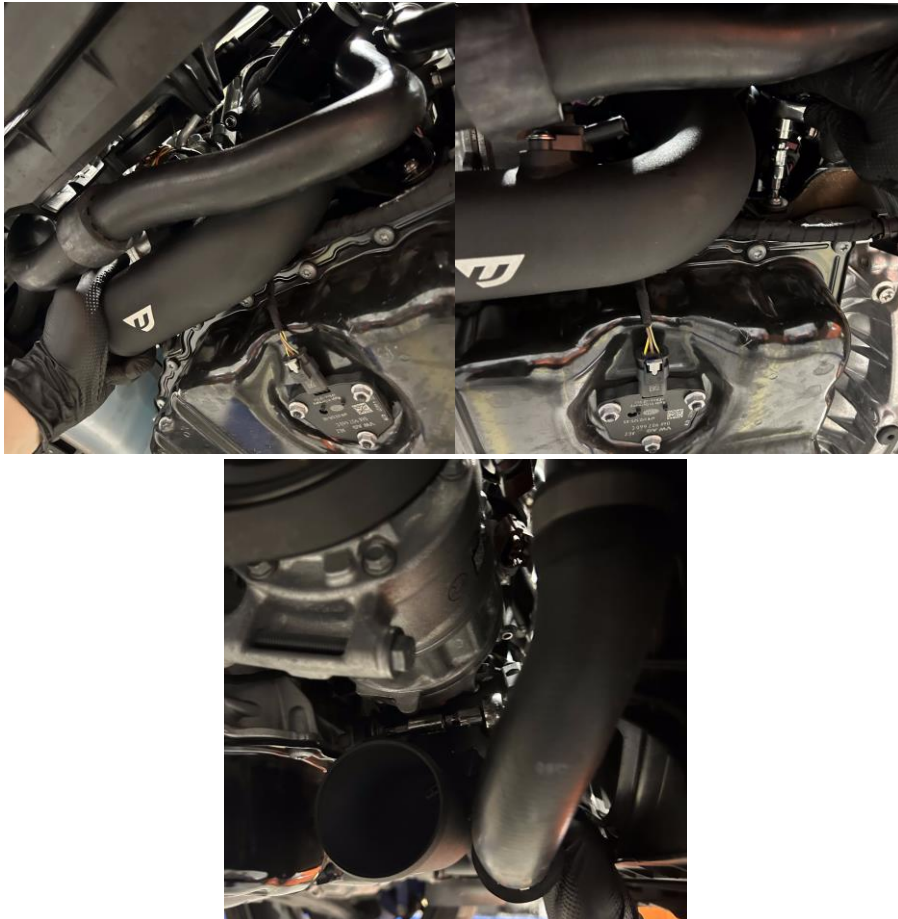


Fig.25.1 – 25.2 – 25.3

26. Reconnect the MAP sensor and affix the wiring harness looms into the proper/appropriate mounting locations / brackets on the Unitronic IC Outlet Charge Pipe.

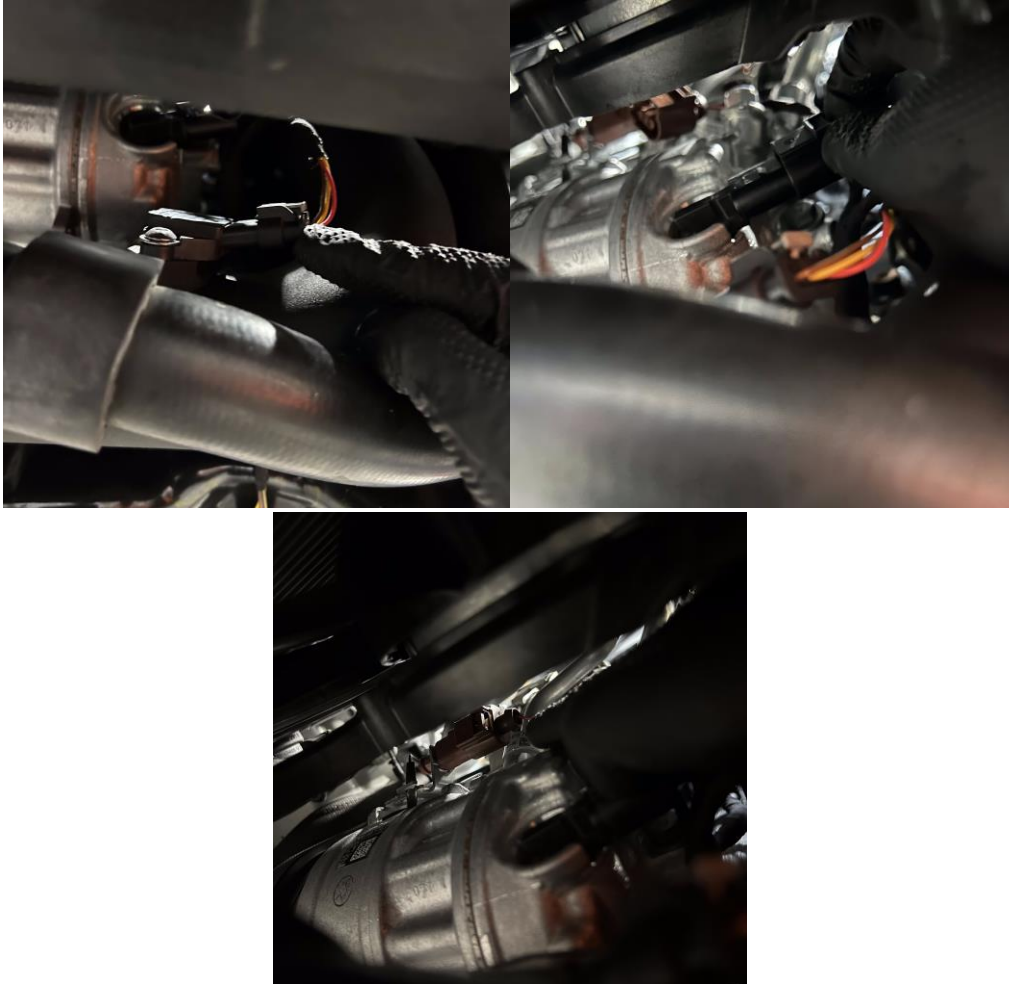


Fig.26.1 – 26.2 – 26.3

27. From the top of the engine bay, tighten the upper throttle body hose clamp making sure the silicone is seated properly on the throttle body. (See Fig.27)

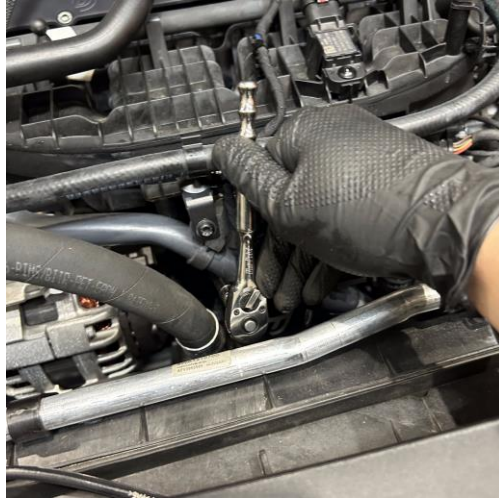


Fig.27

28. Install the Unitronic IC Inlet Charge Pipe (UH015-IC2) by tilting it towards the rear of the vehicle inserting the turbo side first, then sliding the rest of the charge pipe all the way downwards, while being careful not to get any piping or wiring caught.

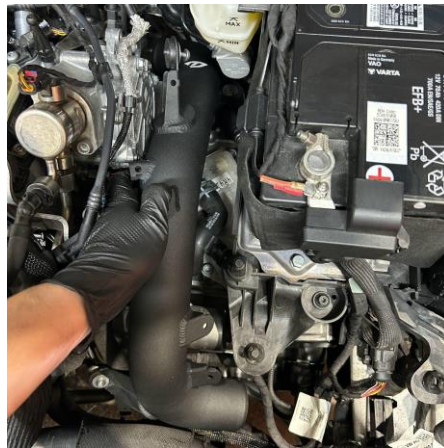


Fig.28

29. Moving to the rear of the engine bay, locate your Unitronic Turbo Outlet Elbow Silicone Coupler (UH050-IC1) and install it onto the turbo muffler and Unitronic IC Inlet Charge Pipe (UH015-IC2). Install this silicone coupler starting from the back to the front, for easiest installation.



Fig.29.1 – 29.2

30. Tighten the top fastener on the Unitronic IC Inlet Charge Pipe (UH015-IC2) using a T30 Torx.



Fig.30

31. From the bottom of the vehicle, locate your Unitronic Intercooler Silicone Inlet and Outlet Hoses (UH047-IC1 & UH048-IC1) and install them into position. (See Fig.31)



Fig.31

32. Tighten the bottom fastener on the Unitronic IC Inlet Charge Pipe (UH015-IC2) using a T30 Torx.



Fig.32

33. Tighten all the hose clamps using a flat head screwdriver or 7mm socket and ratchet.



Fig. 33.1 – 33.2 – 33.3 – 33.4

34. Clip back in all the coolant hoses, harnesses and the cable guide that were removed previously.



Fig. 34.1 – 34.2 – 34.3

35. Re-install the Air Intake System.

36. Re-install the belly-pan.

Congratulations! You have successfully installed Unitronic's Charge Pipe Kit for MK8 GTI.