



## INSTALLATION INSTRUCTIONS

### Unitronic Downpipe for 2.0 TSI® Evo4 AWD MQB® UH072-EXA

Unitronic recommends that you read through the entire installation instructions prior to beginning the installation to familiarize yourself with the included components, tools required, and procedures involved with the installation.

**DISCLAIMER:** Unitronic recommends that a Unitronic Authorized Dealer or other qualified and trained professional should perform the installation of this product.

Unitronic Installation Instructions are also available in digital format, if you prefer. Please visit the corresponding product page for a link to download the digital Installation Instructions. [www.getunitronic.com](http://www.getunitronic.com)

It is recommended to confirm all parts are present prior to beginning the installation.

#### PACKING LIST:

PART NUMBER	DESCRIPTION	QUANTITY INCLUDED
UH042-EX2	MK8/8Y Upper Downpipe Section Uni Cat fit RHD	1
UH014-EX1	MQB 1.8/2.0TSI AWD Lower Downpipe Section	1
UH009-EX3	MQB 1.8/2.0TSI Transversal Reducer Quattro®	1
UH001-EX0	Unitronic 3" V-Band Clamp	2
UH002-EX7	3-inch Sealing Ring	2

#### RECOMMENDED TOOLS NEEDED:

- Oxygen Sensor Wrench
- T25 Torx
- 8mm Hex socket
- 10mm 12-point socket
- 10mm Triple Square
- 6mm Hex socket
- 13mm socket
- 18mm socket
- 3/8" Ratchet
- 12" Extension
- Torque wrench
- Pick
- Paint Marker
- Pry bar



## INSTALLATION INSTRUCTIONS

### Unitronic Downpipe for 2.0 TSI® Evo4 AWD MQB® UH072-EXA

- 1** Place the vehicle on jack stands or vehicle hoist and open the engine compartment. **(MAKE SURE TO ALLOW THE EXHAUST TO COOL DOWN BEFORE BEGINNING INSTALLATION)**
- 2** If your car is equipped with an engine cover, remove it by pulling upwards on every corner.
- 3** Unplug the primary oxygen sensor connector located on the engine wiring harness channel by unclipping it from the plastic bracket and pressing the tab to disconnect it. Unclip the wiring from the metal retaining clip. Finally unscrew the O2 sensor with the appropriate tool or a 22mm wrench. (See Fig. 3)
- 4** Disconnect the secondary oxygen sensor connector near the brake fluid reservoir on the firewall and unclip the wiring from the plastic retaining clips. (See Fig. 4)
- 5** Using a pick tool, release the secondary oxygen sensor wiring from the 2 metal clips securing it along the turbo-charger's metal bracket. (See Fig. 5)
- 6** Remove the retaining bolt from the factory v-band using a 6mm Hex socket. (See Fig. 6)
- 7** Remove the T25 Torx screws from the sides and the middle of the plastic belly pan. Unclip the plastic tabs from the front and slide it backwards to remove the pan. (See Fig. 7)
- 8** Remove two (2) 13mm bolts from both sides of the downpipe subframe mount. Then remove subframe mount from the downpipe mounting posts to provide better access for the following steps. (See Fig. 8)
- 9** Remove the upper driver side bolt for the drive shaft heat shield using a 10mm triple square. (See Fig. 9)



FIG. 3



FIG. 4



FIG. 5



FIG. 6



FIG. 7

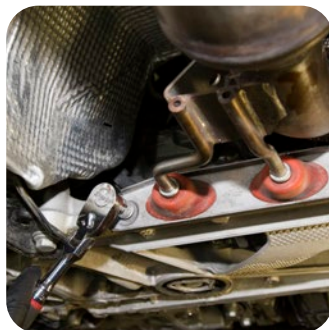


FIG. 8

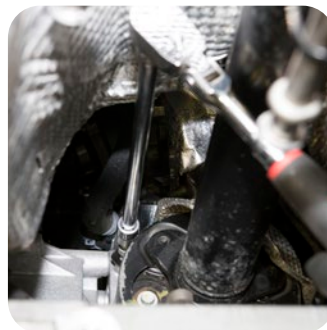


FIG. 9



## INSTALLATION INSTRUCTIONS

Unitronic Downpipe for 2.0 TSI® Evo4 AWD MQB®  
UH072-EXA

- 10** From the passenger side wheel well, use a long extension and 8mm Hex socket to unscrew the nuts securing the axle heat shield and then remove heat shield. (See Fig. 10)
- 11** Using a deep 16mm socket remove the passenger side bolt located right under the lower 8mm Hex nut previously removed. This 16mm bolt secures the drive shaft heat shield to the bevel box on the passenger side. (See Fig. 11)
- 12** Using your 18mm socket, remove the front two (2) "dogbone" mount bolts. (See Fig. 12)
- 13** Using your paint marker, mark the driveshaft orientation to ensure it is realigned and installed properly. (See Fig. 13)
- 14** Using your 10mm 12-point socket, remove the three (3) bolts holding the drive shaft flange to the bevel box. (See Fig. 14)
- 15** Using your pry bar, press the engine/transmission assembly slightly towards the front of the vehicle and remove the driveshaft from the bevel box. NOTE: If damage is done to the driveshaft center seal, replacement is necessary. (See Fig. 15A & 15B)
- 16** With the driveshaft out of the way and towards the driver side of the vehicle, reach in to loosen the lower O2 sensor located on the body of the catalytic converter and remove it. (See Fig. 16)



FIG. 10



FIG. 11



FIG. 12

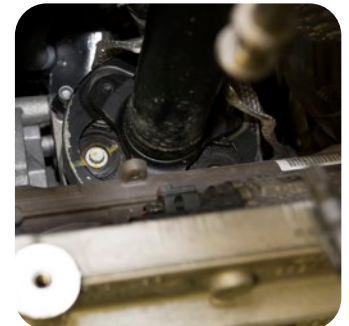


FIG. 13

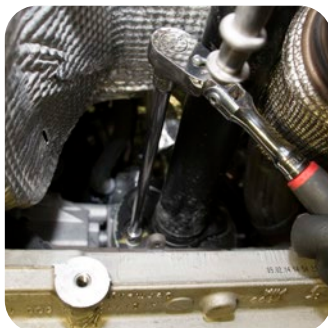


FIG. 14

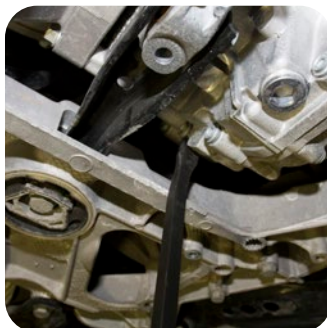


FIG. 15A

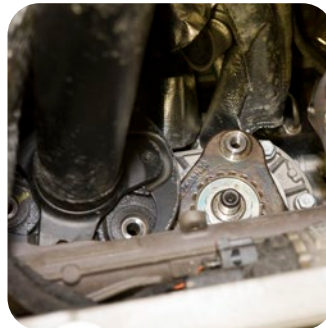


FIG. 15B



FIG. 16



## INSTALLATION INSTRUCTIONS

Unitronic Downpipe for 2.0 TSI® Evo4 AWD MQB®  
UH072-EXA

- 17** Using a 13mm socket, loosen the bolt holding the downpipe bracket to the engine block right above the passenger side axle. (See Fig. 17)
- 18** Remove the two (2) 13mm nuts from the middle exhaust sleeve clamp and slide it out of the way. (See Fig. 18)
- 19** Remove the downpipe from the vehicle by rotating it to the side and sliding it out. (See Fig. 19A & 19B)  
**(DEPENDING ON YOUR TYPE OF EMISSIONS REGULATION PARTICULATE FILTER YOU MIGHT NEED TO LOOSEN THE SUBFRAME BOLTS AND LOWER THE SUBFRAME BY ONE INCH TO GET ADDED CLEARANCE)**
- 20** Locate the Unitronic Upper Downpipe Section (UH042-EX2). (See Fig. 20)
- 21** Install the downpipe on the car from underneath by rotating and maneuvering it into place and finally align the top v-band flange and loosely attach the v-brand clamp and bolt. Only leave the bolt snug (5Nm) to allow for rotation when securing the bracket mounting bolt. (See Fig. 21)
- 22** Reinstall the 13mm bolt securing the downpipe bracket to the engine block and tighten lightly (2Nm) then loosen 90 degrees. (See Fig. 22)
- 23** On top of the engine tighten the v-band to 15Nm.
- 24** Finally torque the downpipe bracket bolt to 20Nm.
- 25** With the Unitronic Upper Downpipe section in place and secured, reinstall the lower O2 sensor and tighten it.
- 26** Reinstall the driveshaft and tighten the three (3) bolts to 60Nm.



FIG. 17

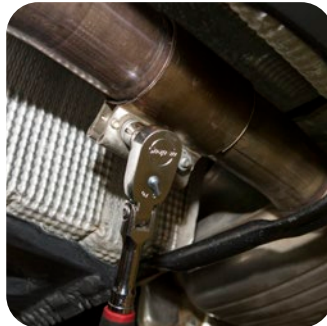


FIG. 18

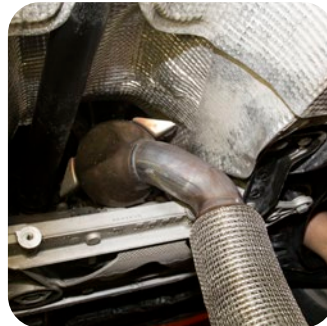


FIG. 19A

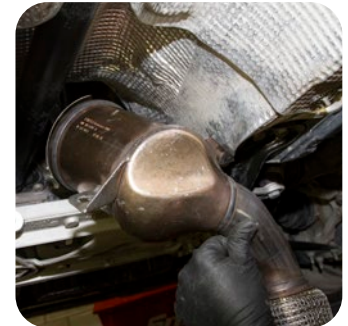


FIG. 19B



FIG. 20

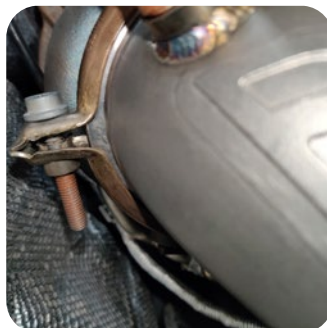


FIG. 21

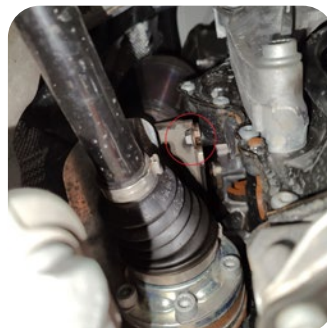


FIG. 22



## INSTALLATION INSTRUCTIONS

### Unitronic Downpipe for 2.0 TSI® Evo4 AWD MQB® UH072-EXA

- 27** Reinstall the drive shaft heat shield and tighten the 10mm triple square bolt on the driver side and the 16mm stud bolt on the passenger side. (See step 11)
- 28** Reinstall the passenger side axle heat shield with the 8mm Hex nuts. (See Step 10)
- 29** Reinstall the dogbone mount 18mm bolts and torque to 70Nm.
- 30** Install the lower subframe bracket onto the mounting bracket of the Unitronic Downpipe Section. (See Fig. 30A) and tighten the two (2) 13mm bolts (See Fig. 30B)
- 31** Locate the Unitronic Lower Downpipe section (UH014-EX1)
- 32** Install the Unitronic Downpipe Section. (See Fig. 32)
- 33** Locate one of the Unitronic V-Band Clamps (UH001-EX0) and one Sealing Ring (UH002-EX7) and insert the sealing ring into the appropriate groove on the v-band flange, mate the Cat Section and Flex Section's V-band flanges together, and affix the V-Band Clamp around the V-band flanges to secure it into position. (See Fig. 33)
- 34** Locate the Unitronic Reducer (UH009-EX3), remaining V-Band Clamp (UH001-EX0) and Sealing Ring (UH002-EX7). Install it into the stock slip clamp to mate the Unitronic Downpipe to the stock cat-Back and tighten the two (2) 13mm nuts. Be sure to place the sealing ring in the appropriate groove on the V-Band Flange before affixing the clamp around the v-band flanges. (See Fig. 34)



FIG. 30A

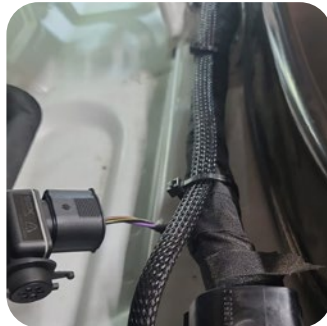


FIG. 30B



FIG. 32

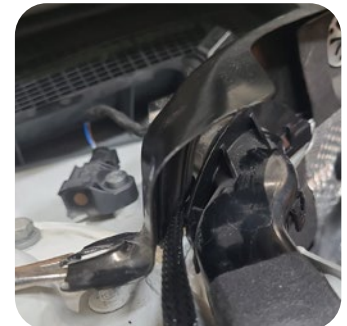


FIG. 33



FIG. 34



## INSTALLATION INSTRUCTIONS

Unitronic Downpipe for 2.0 TSI® Evo4 AWD MQB®  
UH072-EXA

- 35** Reinstall the secondary O2 sensor wiring into the metal clip on the turbocharger bracket. Route the wiring on the firewall clips, reconnect the O2 sensor and clip to the plastic bracket. (See Fig. 35A & Fig. 35B)
- 36** Reinstall the primary O2 sensor near the v-band, clip the wiring into its metal clip, reconnect the connector plug and clip the plugs into the plastic bracket on the wiring tray. (See Fig. 36A & Fig. 36B)
- 37** Finally, check and adjust tip alignment, if necessary, and tighten all Unitronic V-Band Clamps to 10Nm using a torque wrench.

**CONGRATULATIONS! You have successfully installed Unitronic's Downpipe!**



FIG. 35A



FIG. 35B



FIG. 36A



FIG. 36B