

UNICONNECT
INSTRUCTION GUIDE
SETUP

UNICONNECT SUPPORT

UNITRONIC IS AVAILABLE TO SUPPORT YOU THROUGH YOUR UNICONNECT EXPERIENCE. IF YOU ENCOUNTER ANY DIFFICULTY THROUGHOUT THE PROCESS, HAVE ANY QUESTIONS, OR NEED HELP WITH SOMETHING, PLEASE DO NOT HESITATE TO CONTACT UNITRONIC TECHNICAL SUPPORT. WE STRONGLY URGE YOU TO READ THE INSTRUCTIONS IN THEIR ENTIRETY PRIOR TO CONTACTING US FOR SUPPORT, AS MANY COMMON FREQUENTLY ENCOUNTERED QUESTIONS ARE ANSWERED, BASIC FUNCTIONS, FUNCTIONALITY, AND PROCEDURES ARE DEMONSTRATED STEP BY STEP, AND VIRTUALLY EVERY OTHER CORNER OF UNICONNECT IS COVERED IN THE FOLLOWING DOCUMENT.

IF YOU NEED TO CONTACT US, PLEASE DO SO BY EMAIL AT **TECH@GETUNITRONIC.COM** OR BY PHONE AT **1-866-341-2447**. THERE IS NOBODY WHO KNOWS HOW TO HELP YOU BETTER THAN US, SO PLEASE CONTACT US. WHILE POSTING ON THE FORUMS OR SOCIAL MEDIA CAN SOMETIMES BE AN EFFECTIVE SOLUTION, GIVE US THE OPPORTUNITY TO HELP YOU FIRST.

SETUP

USER REGISTRATION, CABLE ACTIVATION, AND APPLICATION INSTALLATION

Unitronic makes it very simple to register your UniConnect account, perform the cable activation, and install the full version of UniConnect. These three subjects will be covered in the same section, as they are done all within the UniConnect Agent. The UniConnect Agent is an activation utility designed to allow Clients to register their account, activate their cable, and then install the full version of the UniConnect application.

GETTING STARTED

If you're reading these instructions, chances are you've found the instruction card insert within your UniConnect box and you've entered your UniConnect cable number to access these instructions that you're reading right now, and a download link for the UniConnect Agent.

Minimum System Requirements:

- Microsoft Windows 7
- Internet Explorer 11
- 1024x768 Screen Resolution

⚠ NOTE: Unitronic does not provide minimum CPU or Memory requirements as we understand there are a plethora of options available on the market. Please be aware that slower CPU's (Processors) and low RAM (Memory) may result in increased loading times and slow overall response through your user experience. UniConnect does check and monitor system resources during application use and alerts you of critical issues relating to your system's performance to ensure we can make your experience as positive as possible.

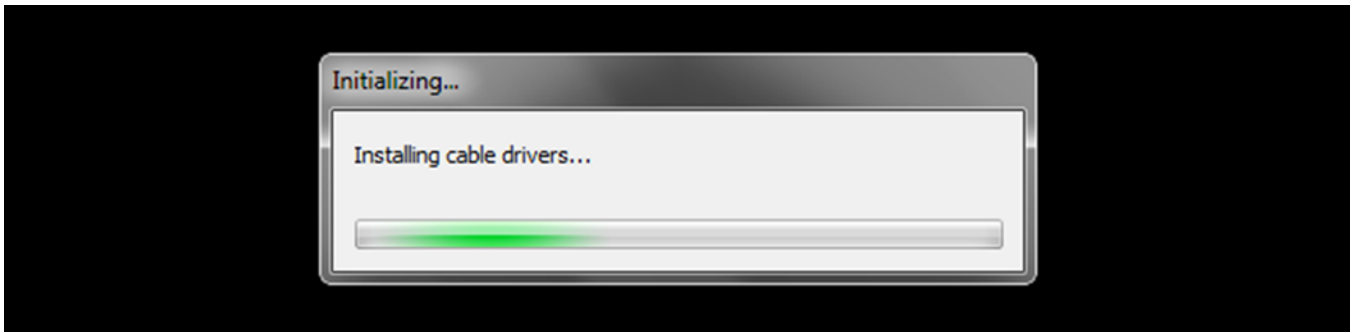
Once you've done confirmed your computer meets the minimum system requirements listed above, please proceed with the instructions below:

1. Click "Download UniConnect" to download the UniConnect Agent.
2. Plug the UniConnect device into a working USB port on your computer and ensure it is well connected to your computer.

⚠ NOTE: Unitronic's UniConnect device will show up in your computer's Device Manager as "UNICONNECT USB DEVICE". It is normal and expected if Windows does not find an appropriate device driver automatically for your UNICONNECT USB DEVICE. The UniConnect Agent will manage installing the appropriate device drivers in future steps below.

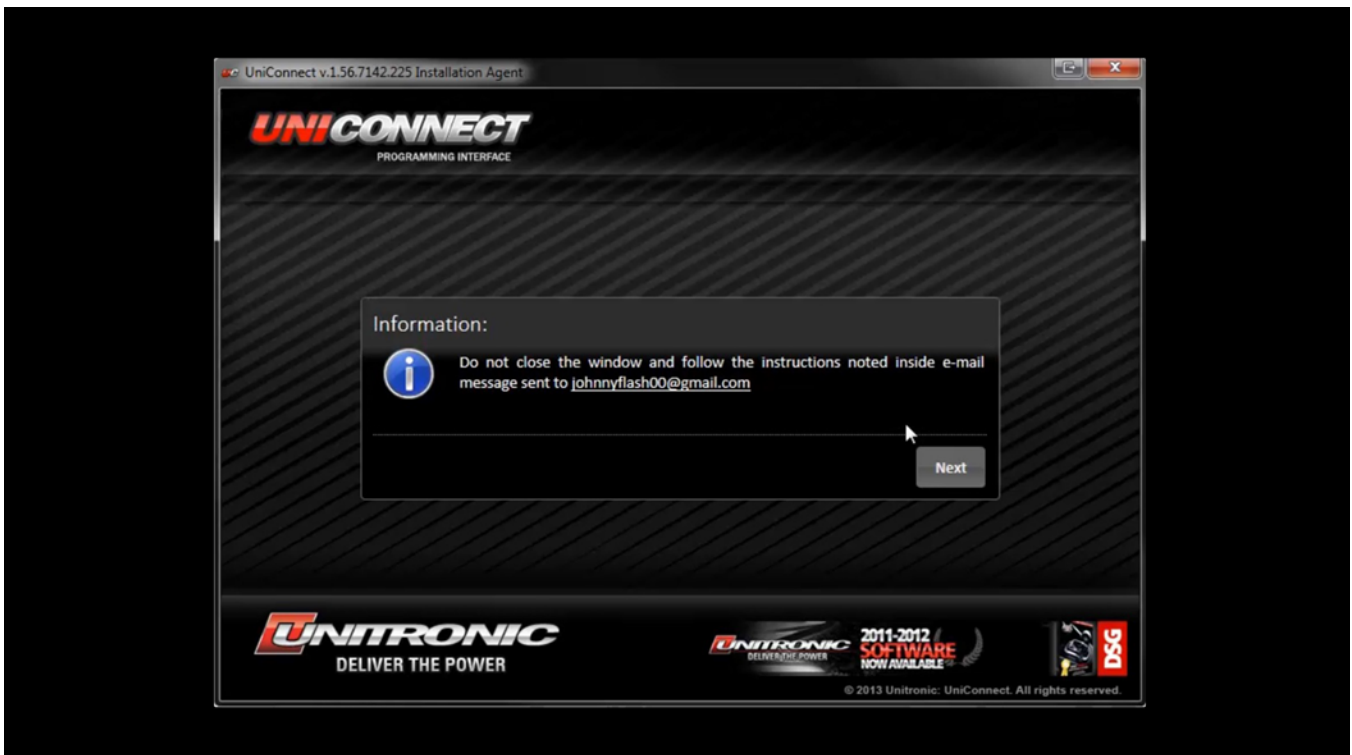
3. Open the UniConnect Agent by double clicking on the file that you downloaded in step #1.
4. Upon launching of the UniConnect Agent, the UNICONNECT USB DEVICE drivers will be automatically installed.

This is necessary for the success of the rest of the process.



⚠ NOTE: Unitronic’s device drivers are fully signed and certified, so you should not be prompted to confirm a security exception for our device driver, however, if you are prompted for such, please choose to “Allow” the exception and/or trust any software/drivers provided by Unitronic/Unitronic Corporation Inc./Unitronic Corp Inc.

5. After the UniConnect Agent starts, the Agent will initiate the cable activation process with Unitronic’s server and you will be informed to login to your email to retrieve the activation email that Unitronic’s server sent to you. THE EMAIL MAY TAKE A FEW MINUTES TO BE RECEIVED BY YOUR MAIL SERVER, so please be patient.

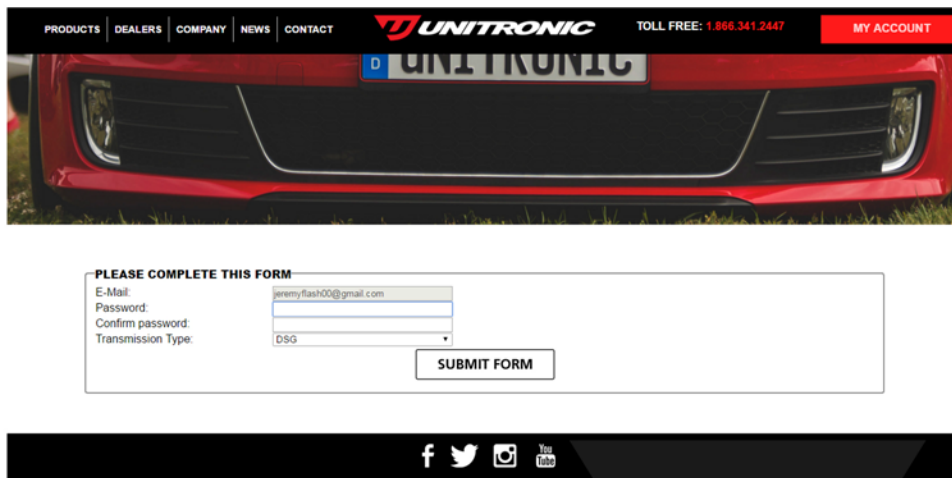


⚠ NOTE: If you still have not received the email within approximately 5 minutes, please check your SPAM or Junk mail, as it is an automated email, and some mail servers may wrongly classify it as SPAM or Junk inadvertently. IF you have checked your SPAM and Junk mail folders, and you have waited at least 15 minutes, please close the UniConnect Agent and contact your Authorized Unitronic Dealer and provide them with an alternate email address to update onto your account records on our server associated with your account. After your Authorized Unitronic Dealer has updated this information on your account, please re-launch the UniConnect Agent to begin the process again.

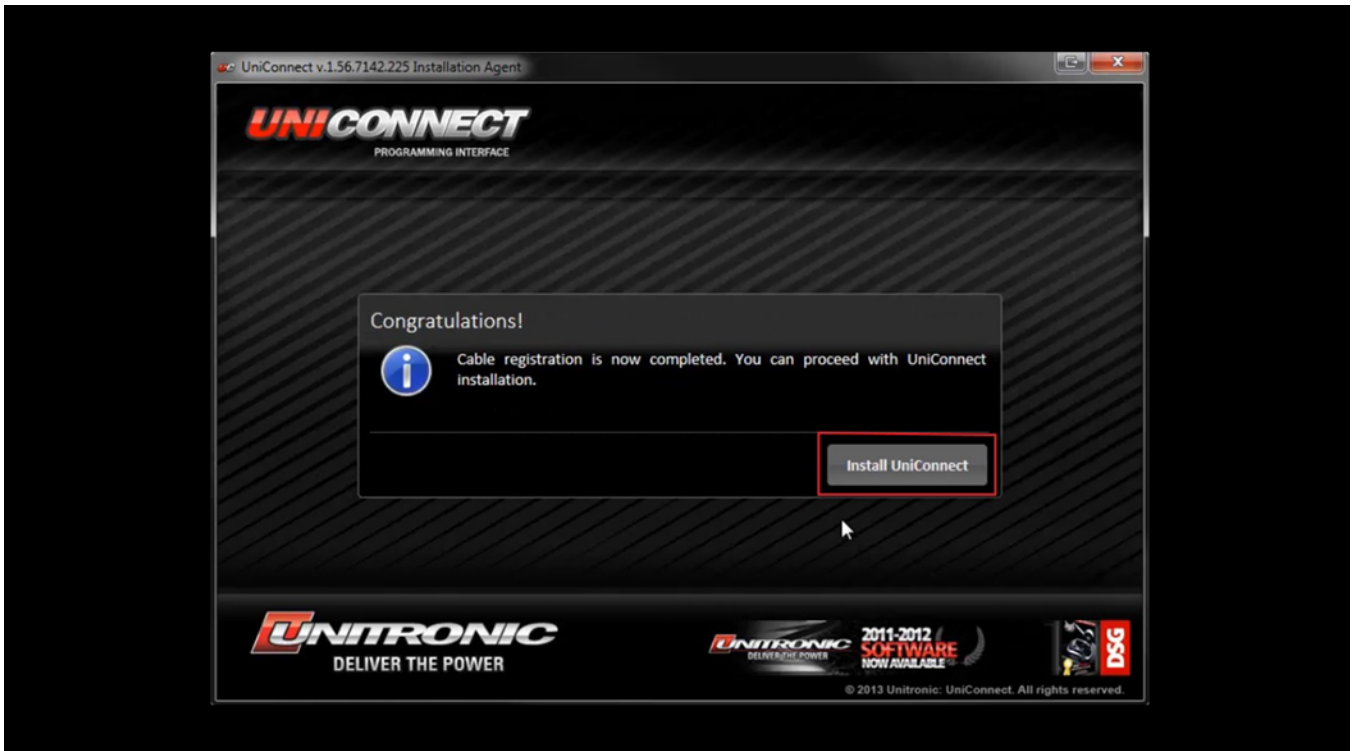
6. Once you have located and opened the Activation Email, please click on the hyperlink labeled "CLICK HERE". It is only necessary to click on this hyperlink once. In most internet browsers, the link will open in a new tab within your browser.



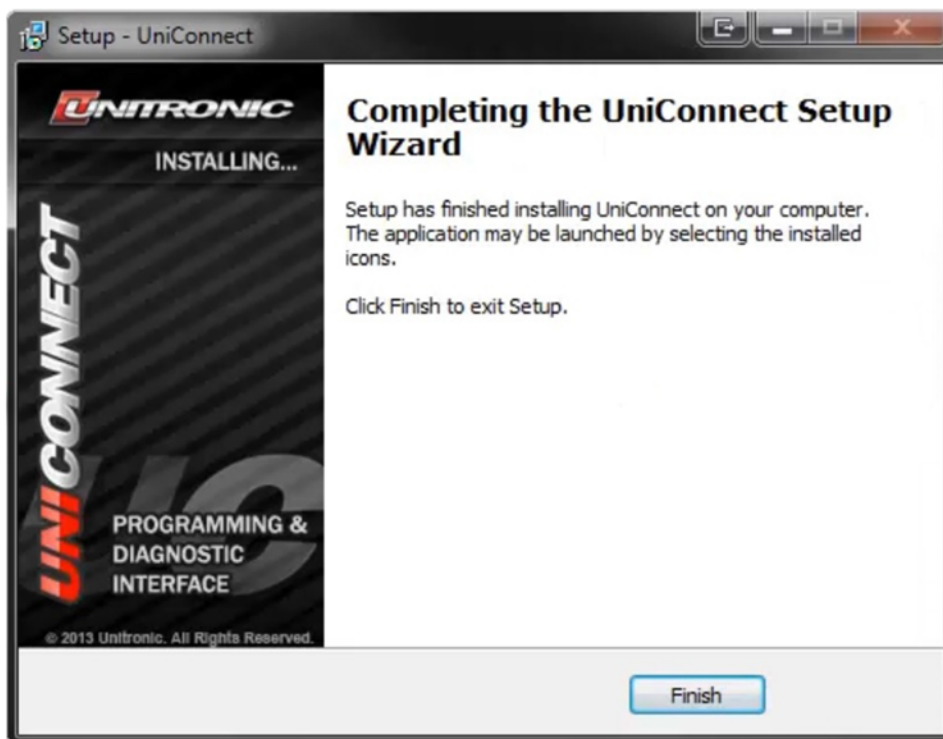
7. Clicking on the link in the body of the Cable Activation Request email will direct you to Unitronic's UniConnect account registration page. Your email address will be pre-filled, which will serve as your username. Enter your desired password twice. Choose your transmission type from the drop-down menu, then click "SUBMIT FORM".



10. Once the download is complete, you will be prompted to install UniConnect onto your computer. Click the button for "INSTALL UNICONNECT".



11. Proceed through the Installation Wizard, which will install UniConnect onto your computer.



Congratulations! You've completed the installation of UniConnect successfully.